

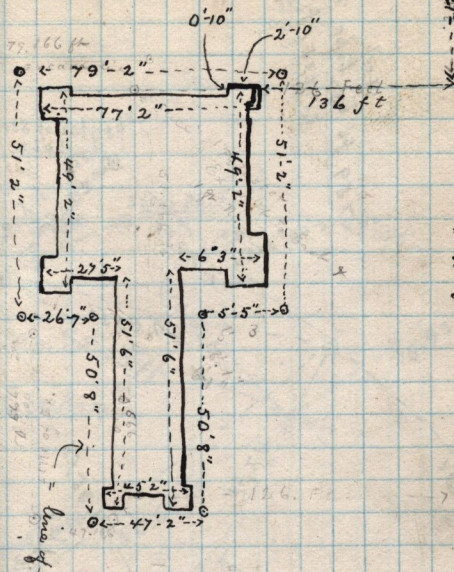
Center 5th St

279

49.0
24.0
10
0 9 1

B.M.
284.5

Center
224.5 ft



Steel Bolt for ref.

99.83 ft

Grade 1.47 ft
above the B.M.
at S.W. cor 5th &
Main for N.W.
cor Lot 4.

Reference Steel Bolt
bearing 9.47 ft
S. from N. line lot
4, B17-Block

ME axis

Street

General ground Plan of City Hall.

April 2-1888.

224.5
49.0
175.